

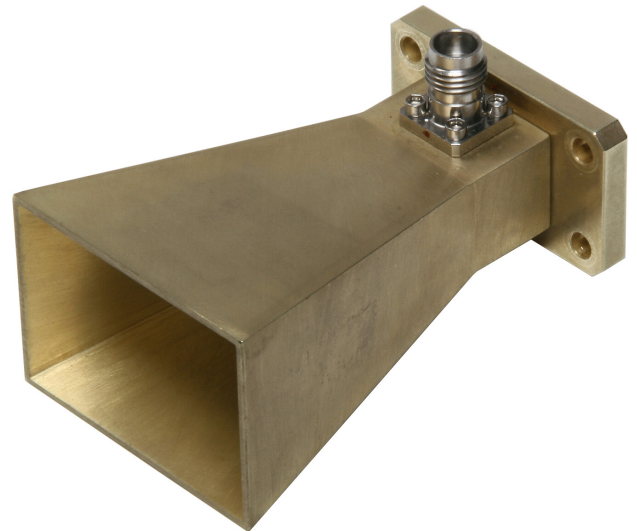
Pyramidal Horn Antenna – Model H-A40

Electrical Specifications

Frequency Range	(26) 28 – 40 GHz
VSWR max.	< 1.3:1
Impedance	50 Ω
Connector	K _{female}
Gain	18 - 21 dB
HPBW	14° - 19°
Polarization	linear
Power (CW / Pulse)	15 W / 30 W

Physical Specifications

Width	39.7 mm (1.56 in)
Depth	67.5 mm (2.66 in)
Height	29.0 mm (1.14 in)
Weight	145 g (0.31 lb)
Material	gold-plated brass / Aluminum (ALODINE1200)



Flange / mounting

3 mm diameter 4 holes - 27 x 13 mm

