

WiFi antenna RFB-10

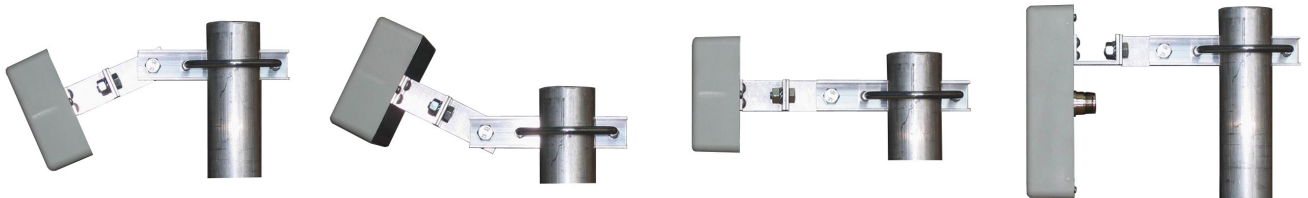
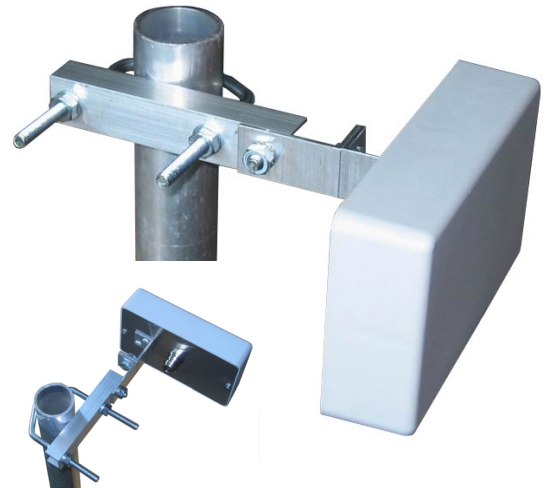
Antenna for terrestrial radio links in frequency range of 2400 - 2480 MHz (IEEE 802.11b/g)

Electrical specifications

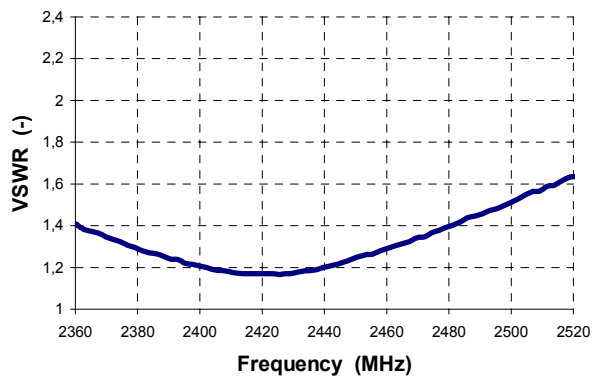
Frequency range	2400 MHz – 2480 MHz
VSWR (max.)	< 1,6 (12,7 dB)
Gain	10 dB
HPBW	45° H-plane 60° E-plane
Front to back ratio	> 15 dB
Polarization	linear – parallel to shorter antenna side
Maximal power	10 W
Connector	50 Ω, N _{female}

Physical specifications

Width	125 mm
Height	75 mm
Depth	43 mm
Weight with fixture	210 g
Installation to antenna mast with diameter	20 to 53 mm
Operation temperature	-25°C to +50°C



Impedance matching



Radiation patterns

