

WiFi antenna RFA-10

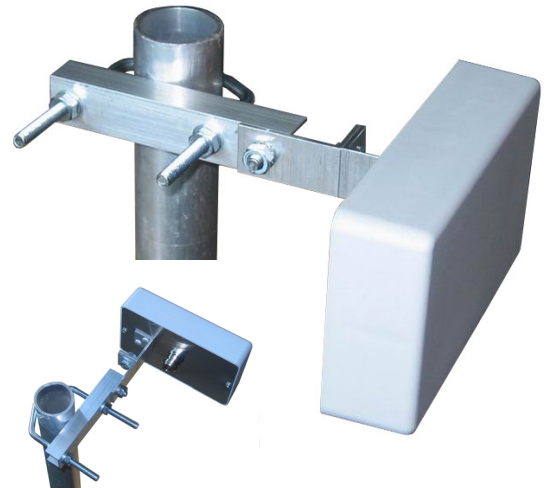
Antenna for terrestrial radio links in frequency range of 5 - 6 GHz (IEEE 802.11a, 802.11g, HIPERLAN/2, etc.)

Electrical specifications

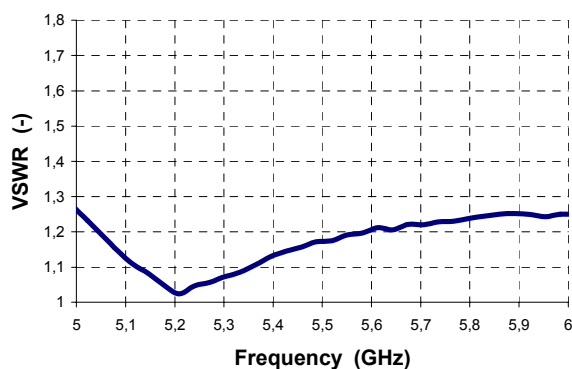
Frequency range	5 GHz – 6 GHz
VSWR (max.)	< 1,5 (-14 dB)
Gain	10 dB
HPBW	55° H-plane 45° E-plane
Front to back ratio	> 20 dB
Polarization	linear – parallel to shorter antenna side
Maximal power	10 W
Connector	50 Ω , N _{female}

Physical specifications

Width	125 mm
Height	75 mm
Depth	43 mm
Weight with fixture	210 g
Installation to antenna mast with diameter	20 to 53 mm
Operation temperature	-25°C to +50°C



Impedance matching



Radiation patterns

